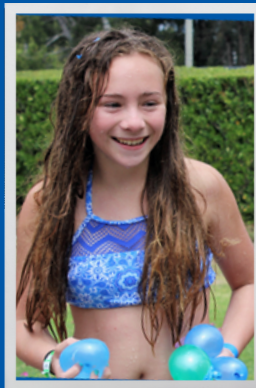


## THE PLAYGROUND AT SIERRA

- A 25-yard swim test is required for guests under the age of 12 who plan to swim alone.
- Non-swimmers must be within arm's reach of an adult while in the water at all times. Both must remain in the shallow end.
- All safety flotation devices must be U.S. Coast Guard approved. Any child using a flotation device will be considered a non-swimmer.
- All children 11 and younger are not permitted in the spa.
- Water slide users must be a minimum of 48 inches and must pass a swim test to ride.
- No alcohol allowed on the premise at any time.



# THE PLAYGROUND AT SIERRA



SIERRA RECREATION CENTER  
26887 RECODO LANE  
949-452-8339



**MISSION VIEJO**  
*Make Memories Your Mission*

# SIERRA RENTALS

## The Playground at Sierra

A good time is always in season at The Playground, which can accommodate groups of all sizes. The Playground at Sierra offers a great opportunity for groups large and small to have a fun day in the sun. Go down the water slide, play on the playground, or relax on a chaise lounge under a large cabana and celebrate any occasion at this versatile location.



Rental pricing is based on the renters membership status, duration of event, and number of attendees.

Please refer to the table below.

## All Rentals at Sierra Include:

- Guests day fees\*
- Private use of picnic pavilion with shaded seating
- 6-foot tables with covers
- Easy up canopies for additional shading, if needed
- Access to playground
- Access to recreational swimming
- Choice of up to 2 lawn games



## Additional Information

- Parties of more than 15 attendees are required to make arrangements with the facility manager before their arrival so a proper lifeguard-to-patron ratio can be met.
- Reservations may be made up to one year in advance, with a minimum of three weeks notice. Reservation times include setup and tear down.
- Facilities will still be open to the public and other pre-scheduled classes and activities.
- Guest counts must include chaperones and non-swimmers.

Sierra Party	Member 1-25 Guests	Member 26-50 Guests	Non-Member 1-25 Guests	Non-Member 26-50 Guests	Security Deposit
2 Hour	\$200	\$275	\$250	\$325	\$75
3 Hour	\$275	\$350	\$350	\$425	\$75
4 Hour	\$350	\$425	\$450	\$525	\$75

\*If guest number is above threshold, additional fees may apply.