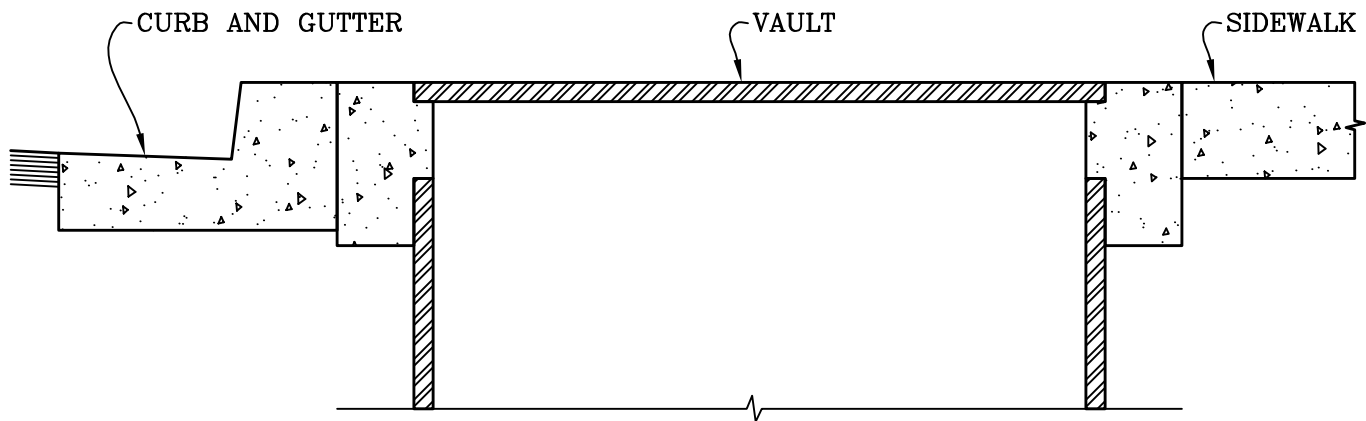


METER BOX DETAIL



VAULT DETAIL

NOTES:

1. METER BOXES AND UTILITY VAULTS IN SIDEWALKS SHALL BE PERPENDICULAR TO AND ADJACENT WITH THE BACK OF CURB, AND SHALL BE FLUSH WITH TOP OF SIDEWALK.
2. WITHIN THE SIDEWALK AREA, METER BOXES SHALL HAVE A BOLT DOWN CONCRETE COVER AND UTILITY VAULTS SHALL HAVE A BOLT DOWN DIAMOND PLATE COVER. COVER SHALL BE BOLTED DOWN WITH 5 SIDED BOLTS. TOP OF BOLTS SHALL BE FLUSH WITH TOP OF COVER.

CITY OF MISSION VIEJO



METER & VAULT COVER DETAIL

STANDARD
PLAN NO.

330

Robert Anderson 9-23-03

APPROVED

RCE 30190

DATE

SHT 1 OF 1