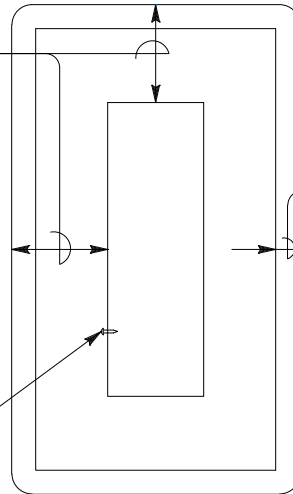


5 1/2" ± 1/2" FOR 12" SECTIONS

R = 2" ± 1/2"



2" RETROREFLECTIVE STRIP

DRILL SIGNAL FACE AND
ATTACH BACKPLATE WITH
SIX 10-24 OR 10-32
SELF-TAPPING AND LOCKING
STAINLESS STEEL MACHINE
SCREWS AND FLAT WASHERS

12" SECTIONS

BACKPLATE

NOTES:

1. THE BACKPLATE MATERIAL MUST BE A HOMOGENEOUS BLACK COLOR WITH A LUSTERLESS FINISH.
2. BACKPLATES FOR SIGNAL AND LIGHTING SYSTEMS MUST HAVE A 2" RETROREFLECTIVE STRIP ON THE FACE AROUND THE PERIMETER. THE STRIP MUST BE TYPE XI FLUORESCENT YELLOW RETROREFLECTIVE SHEETING.
3. BACKPLATE SHALL CONFORM TO THE LATEST CALTRANS STANDARD PLAN NO. ES-4C.

CITY OF MISSION VIEJO



TRAFFIC SIGNAL
BACKPLATE DETAIL

STANDARD
DETAIL NO.

349

Rich Schloinger

03/21/23

APPROVED BY: CITY ENGINEER RCE 51160

DATE

SHT 1 OF 1