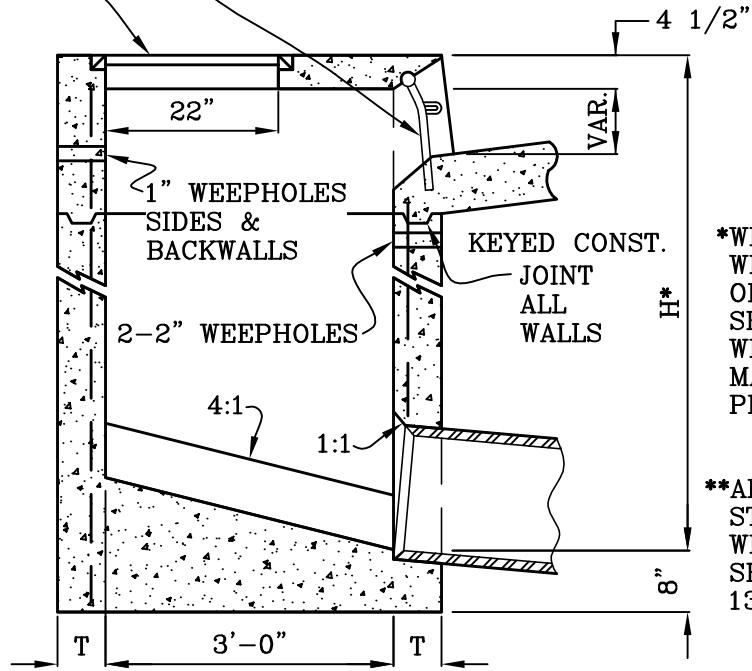


\*\* SEE STD. PLAN 404 FOR CURB SUPPORT DETAILS.

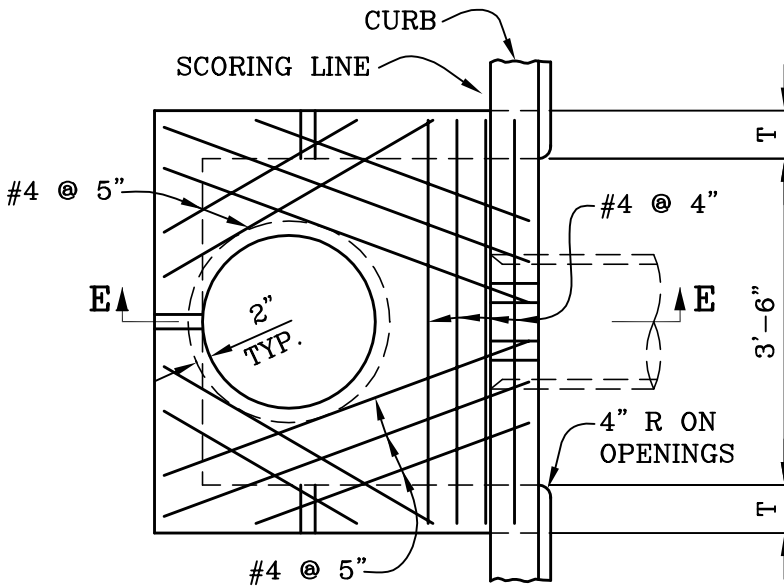
H	T
8'-0" OR LESS	6"
8'-1" TO 20'-0"	8"



SECTION E-E

\*WHEN OUTLET PIPE IS CONSTRUCTED WITHIN ROADWAY, A MINIMUM OF 30" OR THE ROADWAY STRUCTURAL SECTION THICKNESS PLUS 6", WHICHEVER IS GREATER, SHALL BE MAINTAINED BETWEEN THE TOP OF PIPE AND THE ROADWAY SURFACE.

\*\*ALHAMBRA FOUNDRY A-1531-B, APEX STEEL CORPORATION X100B OR EQUAL WITH APPROVED LOCKING DEVICES. SHIPPING WEIGHT (FRAME & COVER) = 130 LBS.



PLAN

NOTES:

1. CURB OPENING SHALL CONFORM TO CURB ALIGNMENT.
2. SEE STD. PLAN 404 FOR DETAILS AND NOTES.
3. SEE STD. PLAN 406 FOR LOCAL DEPRESSION DETAILS.

CITY OF MISSION VIEJO



INLET TYPE I

STANDARD PLAN NO.

401

*Robert Anderson*

9-23-03

APPROVED

RCE 30190

DATE

SHT 1 OF 1