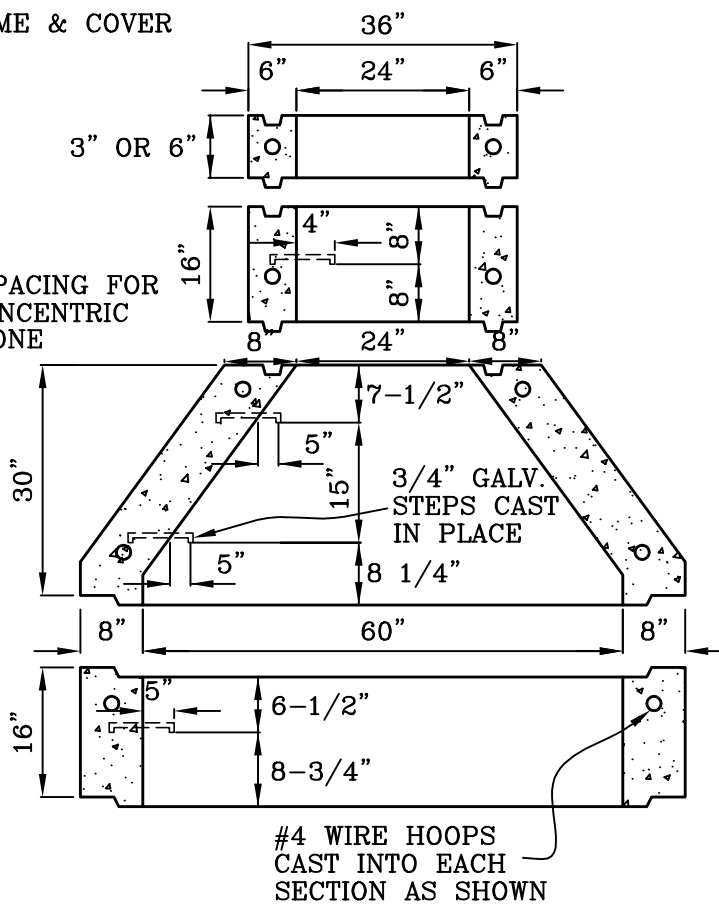


48" I.D. CONCENTRIC CONC. MANHOLE
TYPICAL SECTION

X=12" INTERVALS IF MORE THAN ONE STEP
 Y=16" INTERVALS IF MORE THAN ONE STEP



60" I.D. CONCENTRIC CONC. MANHOLE
TYPICAL SECTION

CITY OF MISSION VIEJO

**NON-REINFORCED CONCRETE
 CONCENTRIC CONE MANHOLE**

STANDARD
 PLAN NO.

416



Robert Anderson 9-23-03

APPROVED RCE 30190 DATE

SHT 1 OF 2

NOTES:

1. CONSTRUCTION SHALL BE IN ACCORDANCE WITH STANDARD SPECIFICATIONS FOR PUBLIC WORKS CONSTRUCTION.
2. SEE STD. PLAN 422 FOR MANHOLE STEP DETAILS. MAXIMUM SPACING = 17".
3. THE MANHOLE PIPES AND GRADE RINGS SHALL BE ARRANGED IN ORDER OF LONGER TO SHORTER LENGTHS FROM BOTTOM TO TOP.
4. MANHOLE DETAILS SHALL BE SUBMITTED TO THE CITY ENGINEER FOR APPROVAL.
5. PAVEMENT SURFACE SHALL BE FINISHED A MINIMUM OF 1/8" ABOVE MANHOLE FRAME.
6. TOP OF CONE SHALL BE PLACED A MINIMUM OF 6" BELOW BOTTOM OF ROADWAY STRUCTURAL SECTION OR A MINIMUM OF 16" BELOW FINISH GRADE, WHICHEVER IS GREATEST.
7. SEE STD. PLAN 424 FOR MANHOLE FRAME AND COVER.

CITY OF MISSION VIEJO



NON-REINFORCED CONCRETE
CONCENTRIC CONE MANHOLE

STANDARD
PLAN NO.

416

Robert Anderson 9-23-03
APPROVED RCE 30190 DATE

SHT 2 OF 2